



● NEMOTO SENSORTECH DIVISION  
● NANO & CYBERTECH DIVISION



## TECHNICAL INFORMATION SHEET: NEMOTO NAP-66A Catalytic Flammable Gas Sensors



### Specifications:

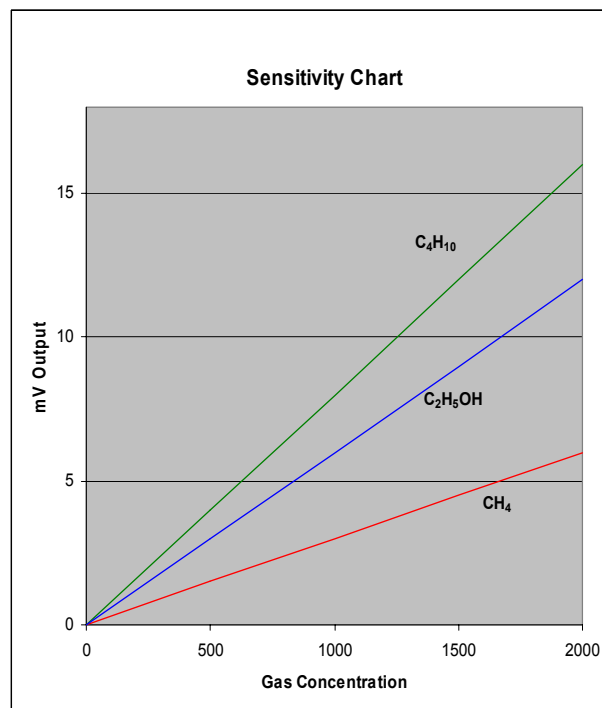
Recommended Voltage:	2.0V +/- 0.20V
Current Drawn:	180 +/- 10mA
Zero Offset:	0mV +/- 35mV
Sensitivity:	Typically 16mV @ 2000ppm C <sub>4</sub> H <sub>10</sub>
Range:	0-50% LEL
Repeatability:	+/- 0.5mV
Expected Lifetime in the field:	>5 years*
Response Time (T <sub>90</sub> ):	8 sec
Temperature Range:	-10°C to +50°C
Humidity:	0-95%RH, non-condensing

\* Measured as time for output to fall below 40% of original, in a typical domestic environment

### General Description:

The Nemoto NAP-66A catalytic (pellistor) type flammable gas sensors supplied as matched pairs of catalytic elements mounted on a single header enclosed in a plastic housing and protected by a metal mesh. Designed as a gas sensor for use in **Domestic (Residential) Gas Detectors**, the sensor detects and measures the presence of gases such as Propane or LPG in air, in the range 0-50% of the Lower Explosive Limit (LEL) of the gas or vapour being measured. **The NAP-66A is optimised for the detection of higher hydrocarbons such as Propane and LPG, and should not be used for the detection of Methane or Natural gas**

The highly advanced and efficient production techniques developed by Nemoto means that the cost of technically superior pellistor technology, usually reserved for Industrial Applications, is now appropriate low enough for them to be used for domestic gas detectors, which have hitherto tended to use less expensive, but less stable and less selective semiconductor type gas sensors.

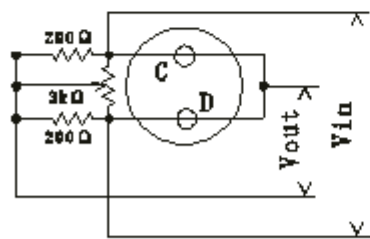
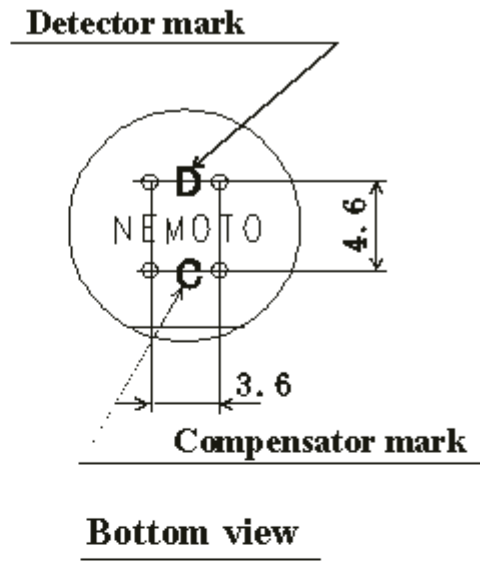
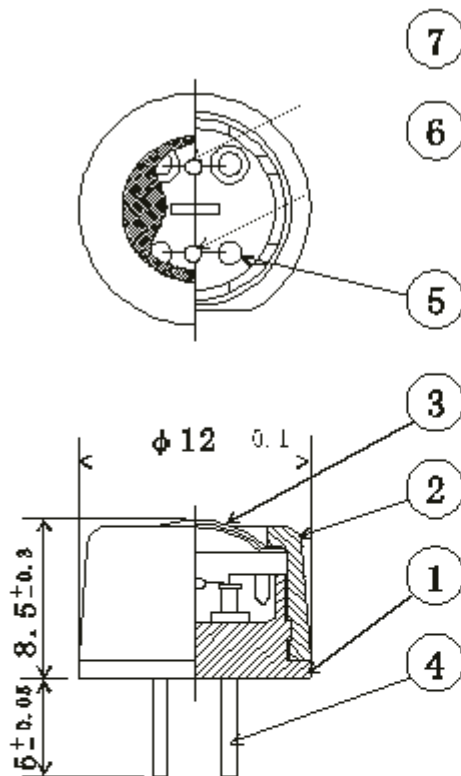


Nemoto has a policy of continuous development and improvement of its products. As such the specification for the device outlined in the data sheet may be changed without notice

ds-NAP66A.doc, issue 2, Feb 2006



**Sensor Dimensions and Circuitry:**



**Measuring Circuit**

No.	Parts names	Material	Remarks
1	Mount	Nylon 66	Glass 20% contained
2	Cap	Nylon 66	Glass 20% contained
3	Mesh	SUS 316	#100, Double mesh
4	Pin	Pure Ni	φ 0.8
5	Coil	PPT	φ 30 μm
6	Compensator		Nemopto & Co, Ltd
7	Detector		Nemopto & Co, Ltd